



Buildings & Places; DESIGN

**TRANSPORT AND THE CITY**  
**ReUse ReVitalize – Good Neighbour**

Raymond Terris



# Findlers Street Central

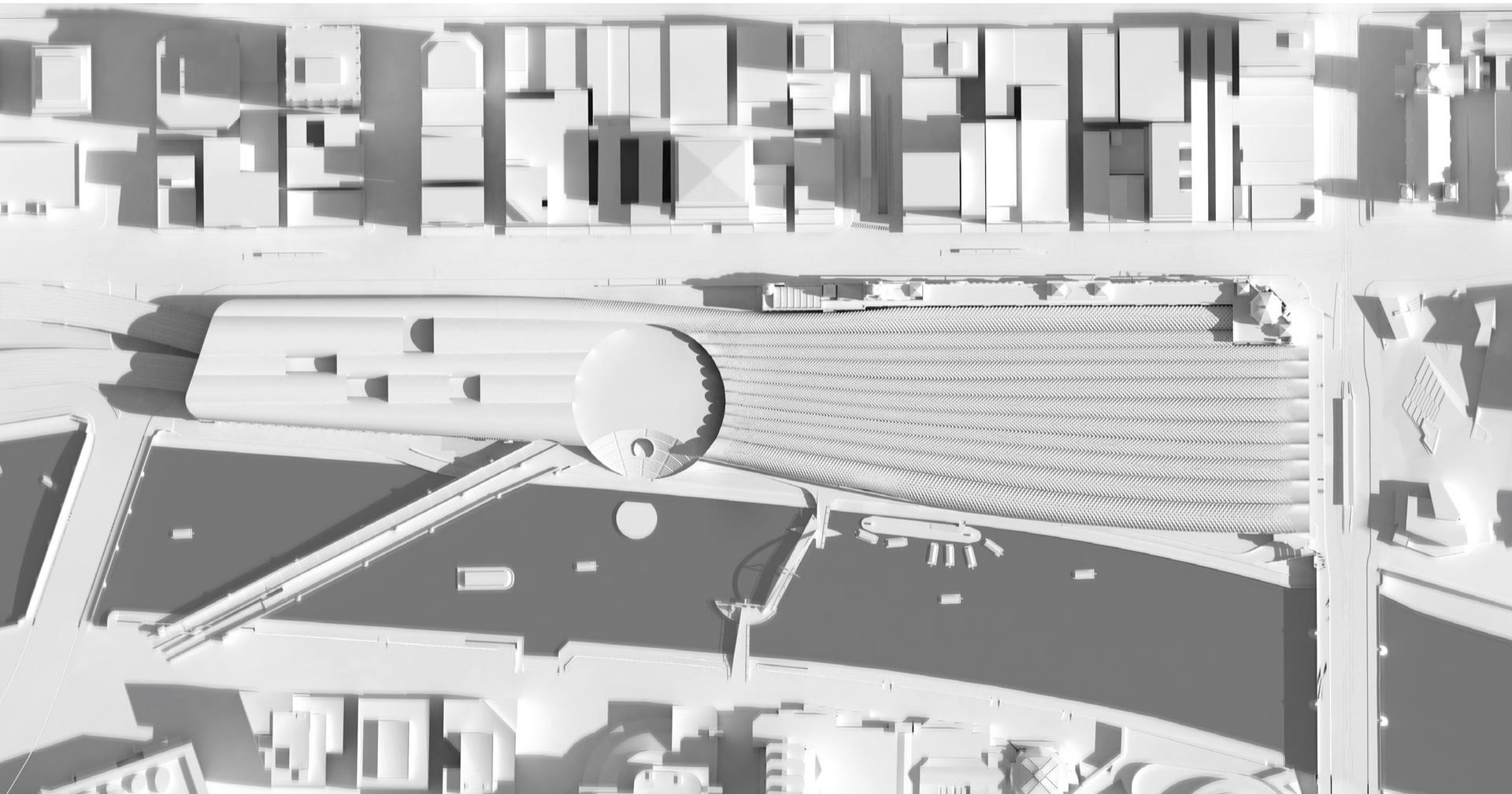
HASSELL + Herzog & de Meuron

**AECOM**



transport:  
Melbourne building,  
the city with the river  
new centre of civic life.

The design integrates the station with the surrounding urban context.  
The combination of public, cultural, civic and retail programs adds diversity,  
enriching the city edge and river frontage.





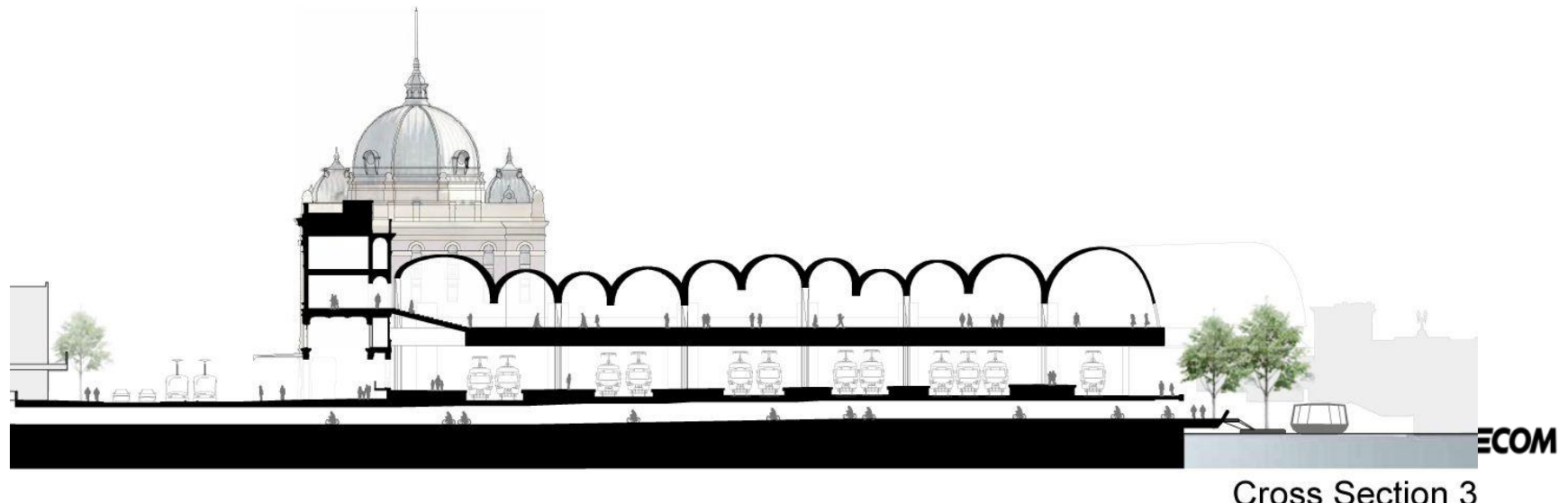
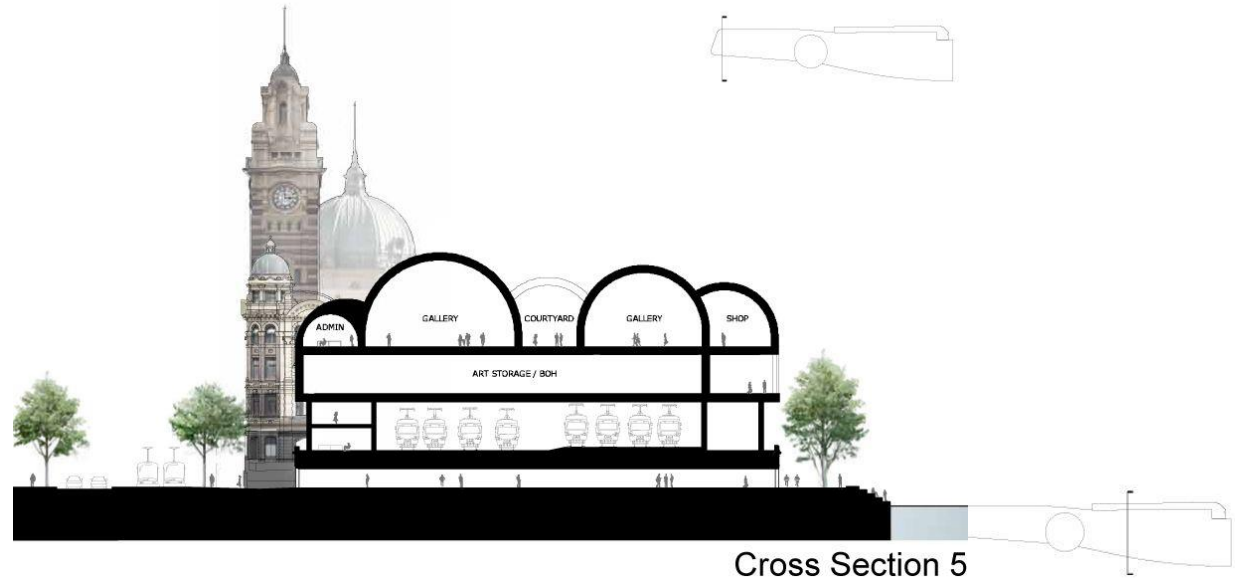
Transformation - a civic destination with a distinct architectural identity  
A home for many different activities. an urban linchpin in the heart of Melbourne.





Retains the best-known heritage buildings, opening up once-bustling  
such as an historic ballroom for public use  
Creates a modern transport hub, improving the passenger experience  
access from all directions and links to other transport modes  
Transforms site into a new civic precinct with art gallery, public plaza,  
amphitheatre, marketplace and permanent home for arts & cultural org



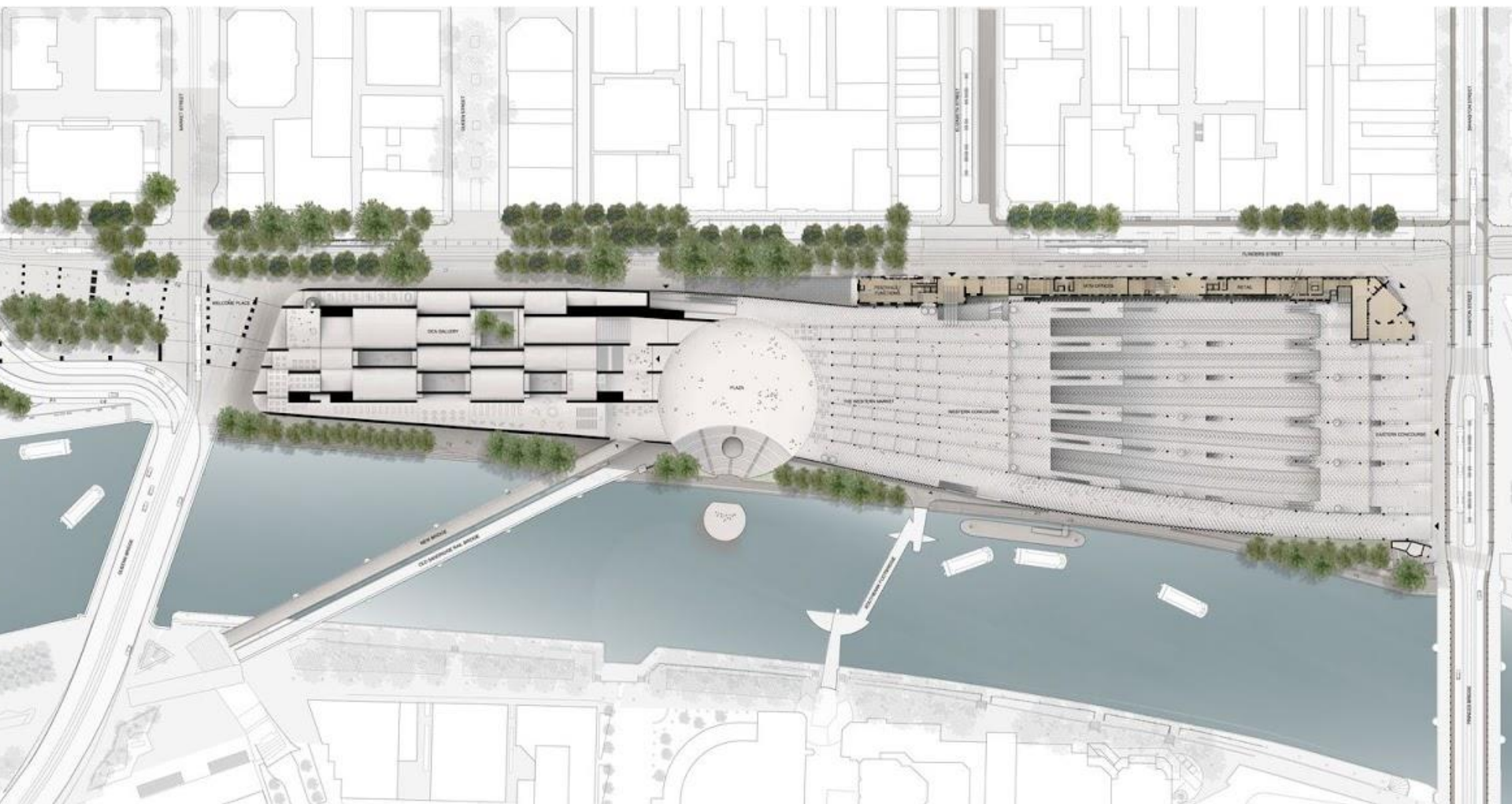




The station concept draws from many aspects - the site's historic fabric, location, and linear nature; the original 19th century design and existing heritage fabric; the river and city edge, rail, public and river-based operations as well as the station's place within the city fabric and public realm.













# King's Cross Central Cross

Argent

Allies and Morrison Porphyrios Associates

Townsend







## King's Cross in nos.

67 acres

50 new buildings

1,900 new homes

20 new streets

10 new public parks

26 acres of open space

30,000 people by 2016





















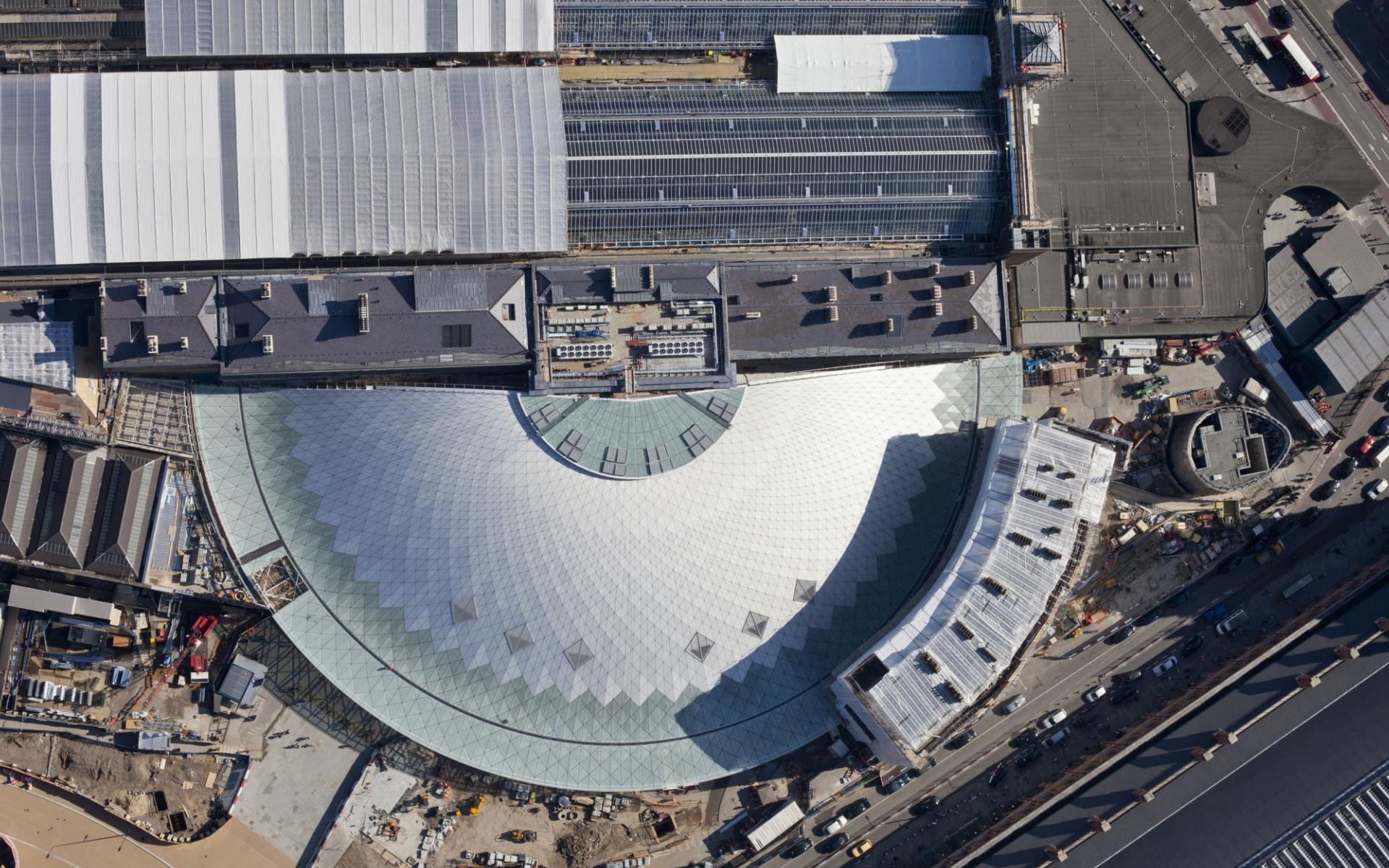
The masterplan sets out a framework for the incremental development of a diverse mix of uses, embedded in one of the UK's most significant industrial heritage sites. These include 5.4m sq ft of office space, 2.2m sq ft of residential space and 1.1m sq ft of retail. A network of public open spaces – streets, lanes, squares and parks – permeate the urban blocks and make connections beyond the site.























underused industrial wasteland is being transformed into a new part of the city with homes, shops, offices, galleries, bars, restaurants, schools and even a university. It's a whole new piece of London with a brand new postcode, N1C





underused industrial wasteland is being transformed into a new part of the city with homes, shops, offices, galleries, bars, restaurants, schools and even a university. It's a whole new piece of London with a brand new postcode, N1C.

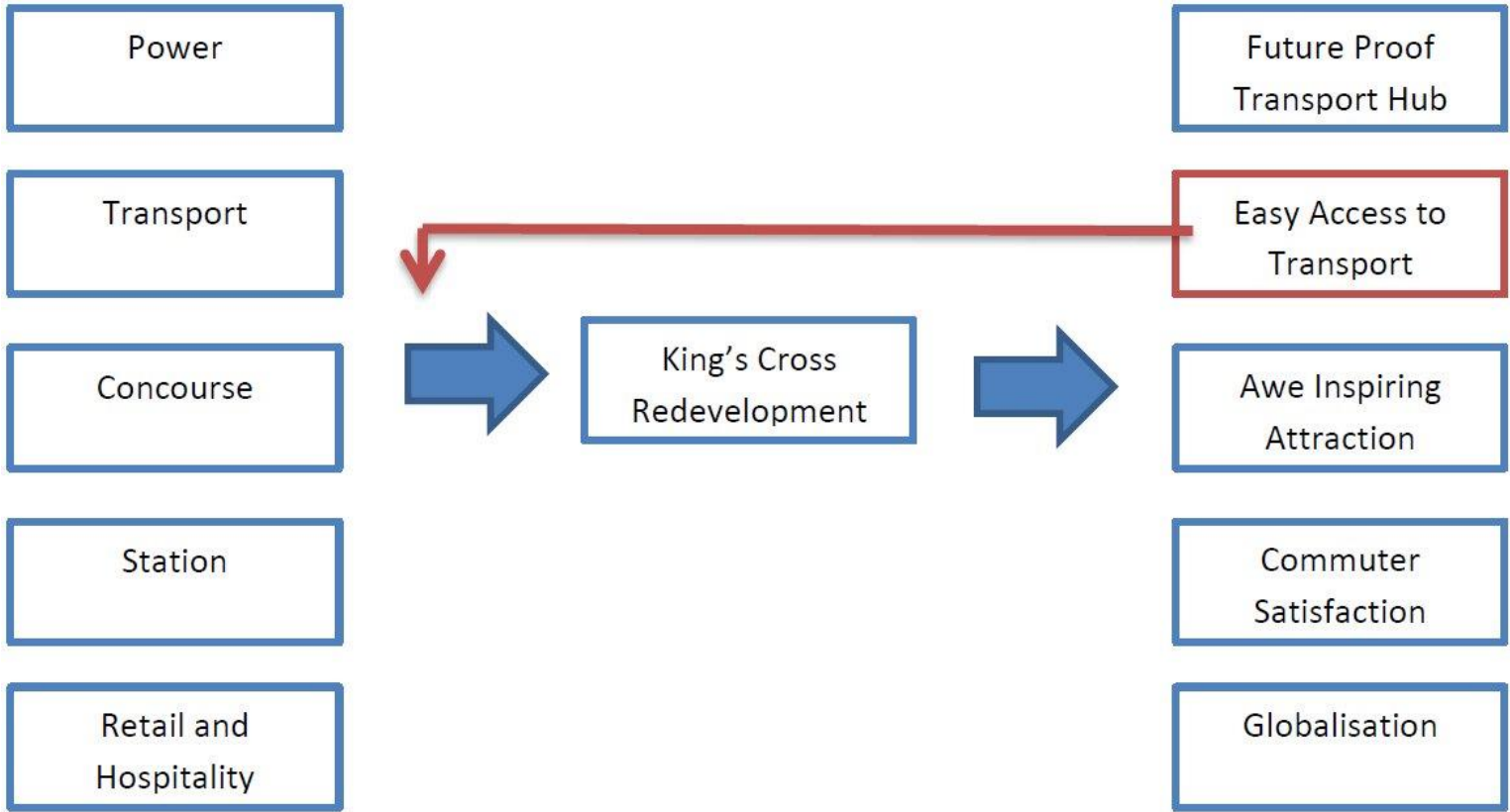






# Analysis of the Project

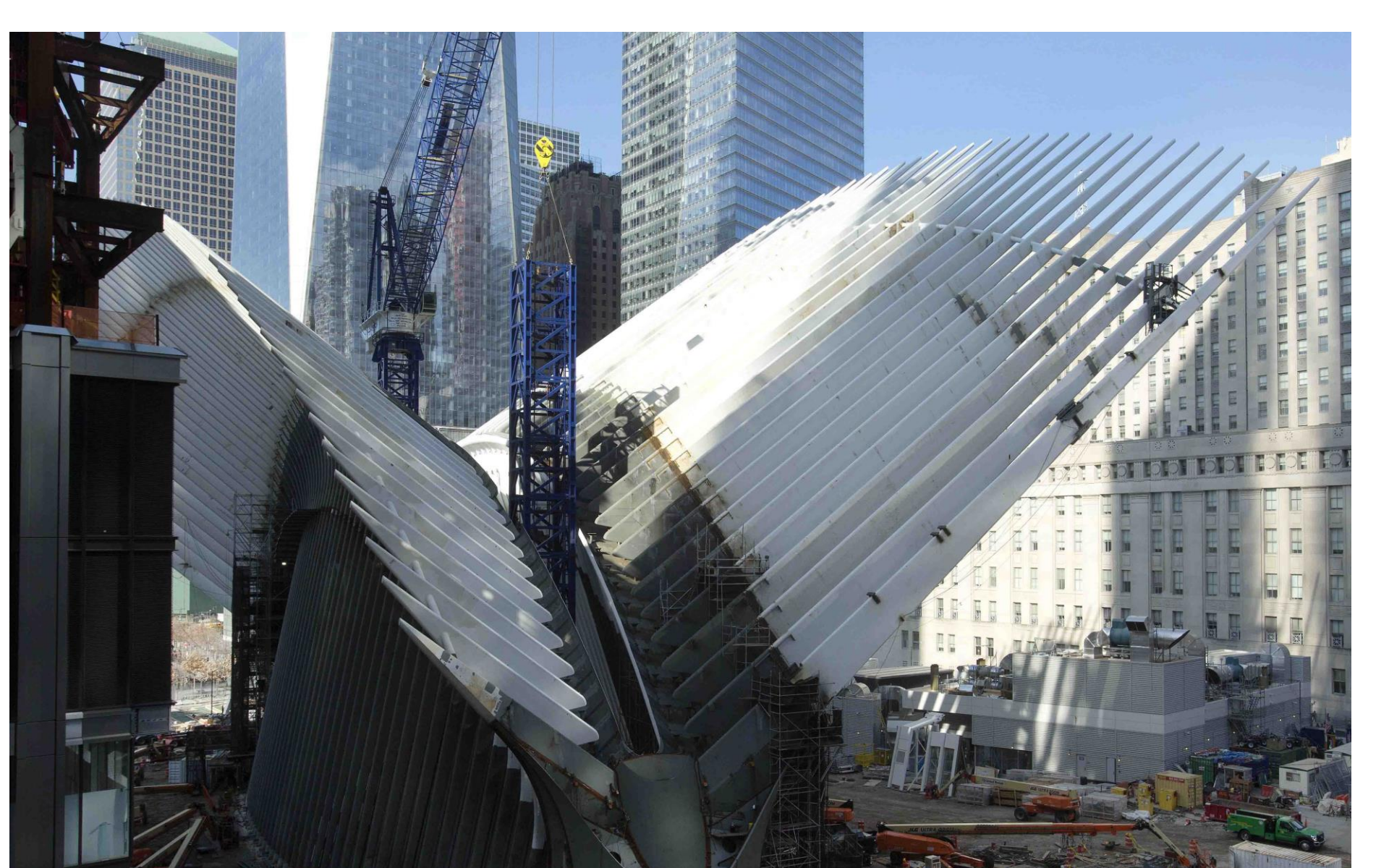
As a system the project can be broken down into a number of different elements and sub elements.



overall system

# World Trade Centre Hub











# San Fran Transit Hub

















# Ekaterinburg Central





**THANK YOU!**